

This document is being provided by:



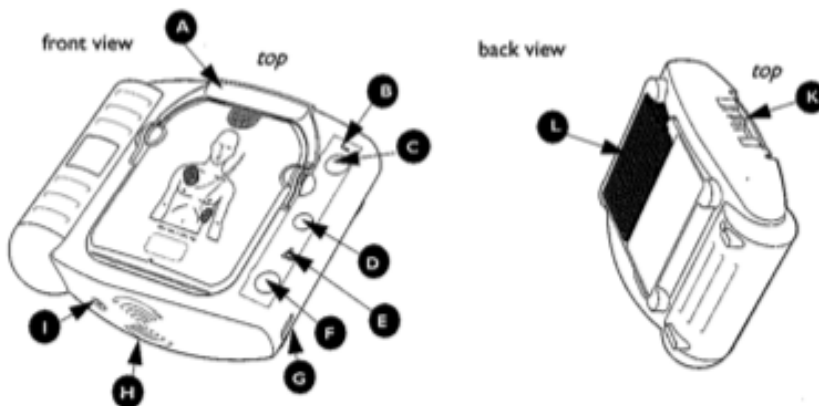
PHILIPS
AED Authorized Master
Stocking Distributor



Office #: (204) 233-CFAT (2328)
Website: www.Canadian-Training.ca
Email: aed@canadian-training.ca

Philips HeartStart Onsite Automated External Defibrillator: SERVICING YOUR AED

*Before servicing your AED, please familiarize yourself with the following information. Questions? Call us anytime!



The HeartStart OnSite Defibrillator


A Pads Cartridge Handle. Pull the handle to turn on the HeartStart and remove the cartridge's hard cover.


B Ready Light. This green light tells you the readiness of the HeartStart.

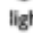
Blinking: standby mode
(ready for use)


Solid: in use

Off: needs attention
(HeartStart "chirps" and
i-button flashes)

C On/off Button. Press this green button  to turn on the HeartStart. To turn off the HeartStart, press the green button again and hold it down for one (1) second.

D Information-Button. This blue "i-button"  flashes when it has information you can access by pressing it. It also flashes at the beginning of a patient care pause when CPR Coaching is enabled.

E Caution Light. This triangular light  flashes during rhythm analysis and is on when a shock is advised, as a reminder that no one should be touching the patient.

F Shock Button. When instructed by the HeartStart to deliver a shock, press this flashing orange button .

G Infrared (IR) Communications Port. This special lens, or "eye," is used to transfer HeartStart data directly to or from a computer.

H Speaker. When the device is being used, its voice instructions come from this speaker.

I Beeper. The HeartStart "chirps" through this beeper to alert you when it needs attention.

J SMART Pads Cartridge. This disposable cartridge contains self-adhesive pads with attached cable. Shown with adult pads cartridge.

K SMART Pads Cartridge Latch. Slide the latch to the right to release the pads cartridge for replacement.

L Battery. The disposable battery is inserted in a recess on the back of the HeartStart.

If you still happen to have any questions on how to replace the electrode pads or battery on the [Philips HeartStart Onsite AED](http://www.Canadian-Training.ca), please visit our servicing videos at our website:

<http://www.canadian-training.ca/aed/aed-servicing>

If you still are having problems, please contact us anytime so you can help guide you:

(204) 233-CFAT (2328)

How to install the new Smart Pads cartridge (Item # M5071A):

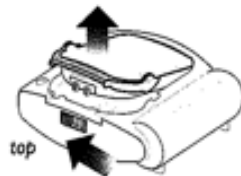
1. Take Onsite AED out of the red carry case.



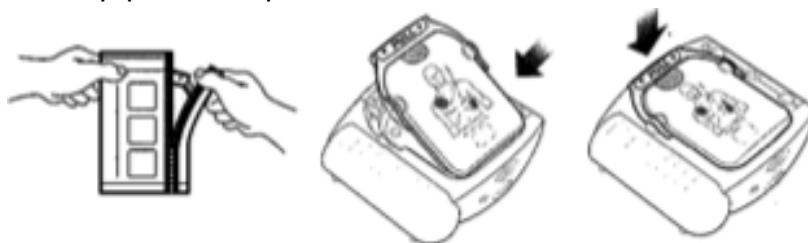
2. You may remove battery from AED



3. Turn AED over and push the release button (to the right) at the top of the AED and take out expired pads cartridge and put to the side.



4. Open new pads cartridge (Tear open foil covering), insert cartridge into AED and snap pads into place.



5. Insert battery back into AED. Put the battery, bottom end first, into the battery compartment on the back of the AED



6. Press the top end down until the battery clicks into place.
7. AED will begin to speak. It will do a 1-minute diagnostic self-test. Momentarily, the AED will ask you to push the flashing orange button. Do so for 1 second when it prompts you.
8. Once the test is complete, the AED will shut down automatically and the green LED light (top right corner of AED), will begin to flicker every few seconds.
9. Servicing completed!

10. Please put the AED back into its protected casing and put it back in either the wall mounted bracket or the alarmed security box. Please hold on to the old set of pads so we may dispose of them. You may also recycle the plastic cartridge and dispose of the pads yourself. Thank you.

How to install the new battery (Item # M5070A):

1. Take Onsite AED out of the red carry case.



2. Remove battery from AED



3. Remove new battery from plastic and insert battery into AED. Put the battery, bottom end first, into the battery compartment on the back of the AED.



4. Press the top end down until the battery clicks into place.

5. AED will begin to speak. It will do a 1-minute diagnostic self-test. Momentarily, the AED will ask you to push the flashing orange button. Push hard on the button for 1 second when it prompts you.

6. Once the test is complete, the AED will shut down automatically and the green LED light (Top right corner of AED), will begin to flicker every few seconds.

7. Servicing completed!

8. Please put the AED back into its protected casing and put it back in either the wall mounted bracket or the alarmed security box. You may also recycle the battery where facilities exist. Thank you.